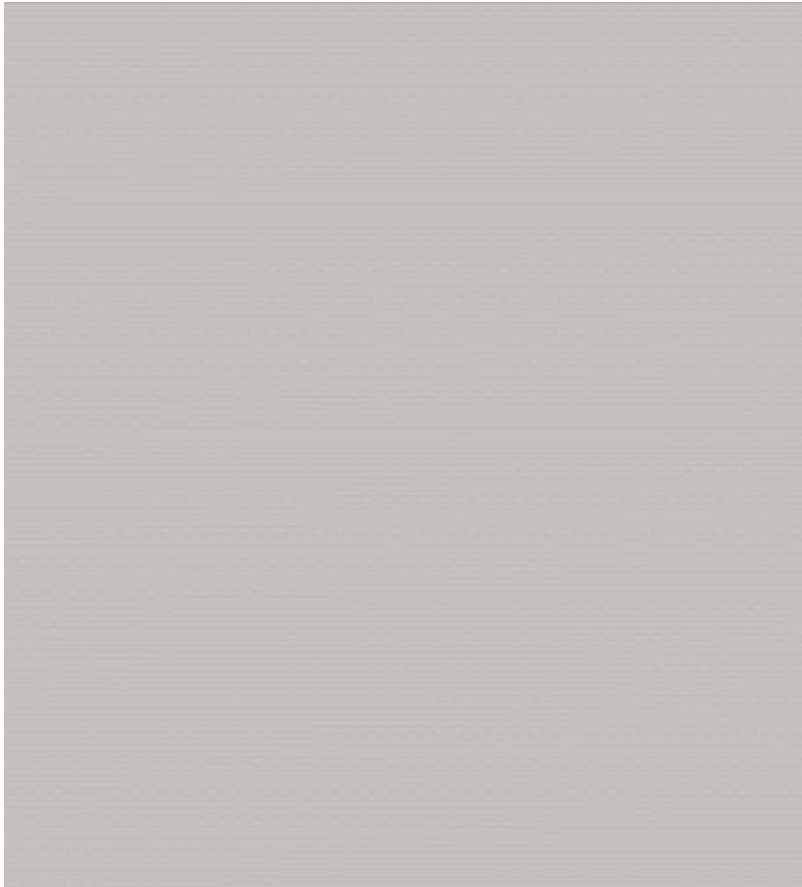


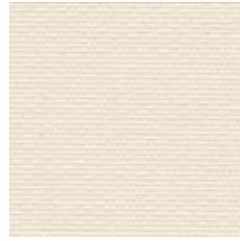
# EX-LITE

MOISTURE RESISTANT PVC FABRICS

# EX-LITE



LIGHT GREY



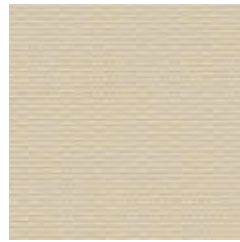
CREAM

2m 102212A2000  
2.5m 102212A2500  
3m 102212A3000  
89mm 102212D  
127mm 102212B



CANVAS

2m 1022412A2000  
2.5m 1022412A2500  
3m 1022412A3000  
89mm 1022412D  
127mm 1022412B



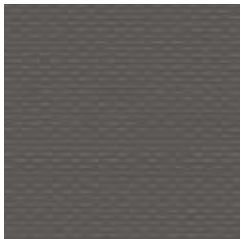
BISQUE

2m 1022234A2000  
2.5m 1022234A2500  
3m 1022234A3000  
89mm 1022234D  
127mm 1022234B



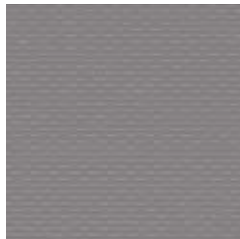
PUTTY

2m 1022430A2000  
2.5m 1022430A2500  
3m 1022430A3000  
89mm 1022430D  
127mm 1022430B



ANTHRACITE

2m 1022299A2000  
2.5m 1022299A2500  
3m 1022299A3000  
89mm 1022299D  
127mm 1022299B



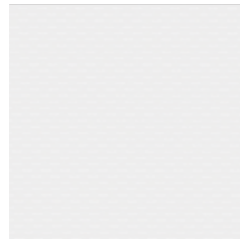
SLATE

2m 1022974A2000  
2.5m 1022974A2500  
3m 1022974A3000  
89mm 1022974D  
127mm 1022974B



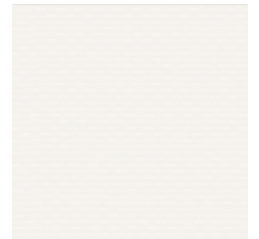
LIGHT GREY

2m 1022928A2000  
2.5m 1022928A2500  
3m 1022928A3000  
89mm 1022928D  
127mm 1022928B



WHITE

2m 102290A2000  
2.5m 102290A2500  
3m 102290A3000  
89mm 102290D  
127mm 102290B



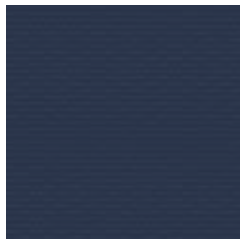
SNOW

2m 1022100A2000  
2.5m 1022100A2500  
3m 1022100A3000  
89mm 1022100D  
127mm 1022100B



BLACK

2m 102299A2000  
2.5m 102299A2500  
3m 102299A3000  
89mm 102299D  
127mm 102299B



NAVY

2m 1022892A2000  
2.5m 1022892A2500  
3m 1022892A3000  
89mm 1022892D  
127mm 1022892B



BLUE

2m 1022172A2000  
2.5m 1022172A2500  
3m 1022172A3000  
89mm 1022172D  
127mm 1022172B



GREEN

2m 1022265A2000  
2.5m 1022265A2500  
3m 1022265A3000  
89mm 1022265D  
127mm 1022265B

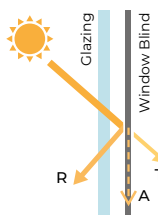
# MOISTURE RESISTANT PVC

# WIPE CLEAN & ANTIMICROBIAL

Specifications	Ex-Lite
Colour Range	13
Dim Out	Blackout
Composition	72% PVC, 28% Glass Fibre
Exterior Colour	Self-coloured
Roller Width	2m, 2.5m, 3m
Roller Roll Length	20m
Vertical Louvre Widths	89mm, 127mm
Vertical Roll Length	100m
Weight	423g/m <sup>2</sup>
Thickness	0.35mm
Blind Types	Roller, Panel, Vertical
Colour Fastness (scale of 8)	6-8 - BS EN ISO 105-B02-2014
Flammability Standard	BS 5867 Part 2 Type B
Environmental Certification	OEKO-TEX® STeP Greenshield - VOC Safe Fabrics
Bacteria & Fungal Resistant	ASTM G21
Cleaning	Wipe clean. Ex-Lite is suitable for high moisture areas.

## Solar, Optical & Colour Fastness Properties

	Solar			Visual			UV Block	CF	DP	SC - EN 14501					Gtot				
	R <sub>s</sub>	A <sub>s</sub>	T <sub>s</sub>	R <sub>v</sub>	A <sub>v</sub>	T <sub>v</sub>				A	B	C	D	E	A	B	C	D	E
Anthracite	14	87	0	15	85	0	100	7	4	0.73	0.72	0.60	0.34	0.57	0.63	0.62	0.52	0.30	0.50
Bisque	61	39	0	66	34	0	100	6	4	0.41	0.44	0.42	0.29	0.41	0.35	0.38	0.37	0.25	0.36
Black	5	95	0	5	95	0	100	8	4	0.79	0.77	0.63	0.35	0.60	0.68	0.67	0.55	0.30	0.52
Blue	21	80	0	14	86	0	100	8	4	0.68	0.68	0.58	0.33	0.55	0.59	0.59	0.50	0.29	0.48
Canvas	67	33	0	75	25	0	100	7	4	0.37	0.40	0.40	0.28	0.39	0.32	0.35	0.35	0.25	0.34
Cream	66	34	0	74	26	0	100	7	4	0.33	0.37	0.38	0.28	0.37	0.29	0.32	0.33	0.24	0.33
Green	30	71	0	33	67	0	100	7	4	0.62	0.62	0.54	0.32	0.52	0.54	0.54	0.47	0.28	0.45
Light Grey	45	55	0	53	48	0	100	7	4	0.52	0.53	0.48	0.31	0.47	0.45	0.46	0.42	0.27	0.41
Navy	9	92	0	7	93	0	100	8	4	0.76	0.75	0.62	0.35	0.59	0.66	0.65	0.54	0.30	0.51
Putty	42	58	0	49	51	0	100	6	4	0.53	0.55	0.49	0.31	0.48	0.46	0.48	0.43	0.27	0.41
Slate	23	77	0	26	74	0	100	7	4	0.67	0.66	0.57	0.33	0.54	0.58	0.58	0.49	0.29	0.47
Snow	81	19	0	92	8	0	100	8	4	0.27	0.32	0.35	0.27	0.35	0.24	0.28	0.30	0.23	0.30
White	77	24	0	81	19	0	100	6	4	0.30	0.35	0.37	0.27	0.36	0.26	0.30	0.32	0.24	0.31



**Solar Gain:** The amount of heat increase resulting from solar energy entering a room. It is the total of three separate parts - the amount of energy transmitted directly into the room, the energy which is absorbed by the blind and the proportion of energy which is absorbed by the window.

**R:** % of reflected heat and light.  
**A:** % of absorbed heat and light.  
**T:** % of transmitted heat and light.  
**UV Block:** the % of UV light blocked by the fabric.  
**Colour Fastness (CF):** Scale of 8, BS EN ISO 105-B02-2014.

**Darkening Performance (DP):** Scale of 0-4.  
 0: lowest opacity  
 4: highest. A rating of 4 indicates the product is completely opaque with no pinholes or light transfer.  
**Please note: Blackout fabric does not create total darkness. As a blind there will be lightstrike around the blind edges.**

**Shading Co-efficient (SC):** The solar heat gain with the blind at the window divided by the solar heat gain with no blind at the window. The lower the shading co-efficient, the higher the efficiency of the fabric.  
**Gtot:** Amount of heat entering through the glazing and shading combined.

**Glazing system (EN 410)**  
 A: Clear Single Glazing.  
 B: Clear Double Glazing.  
 C: Clear Double Glazing Low Emissivity.  
 D: Solar Control Double Glazing Low Emissivity.  
 E: Triple Glazing.

# EX-LITE

