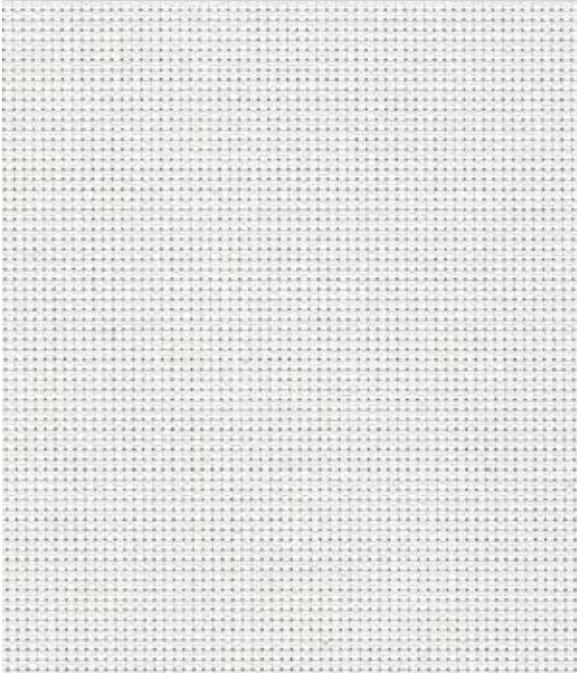


3%

# PERSPECTIVE ALUVIEW

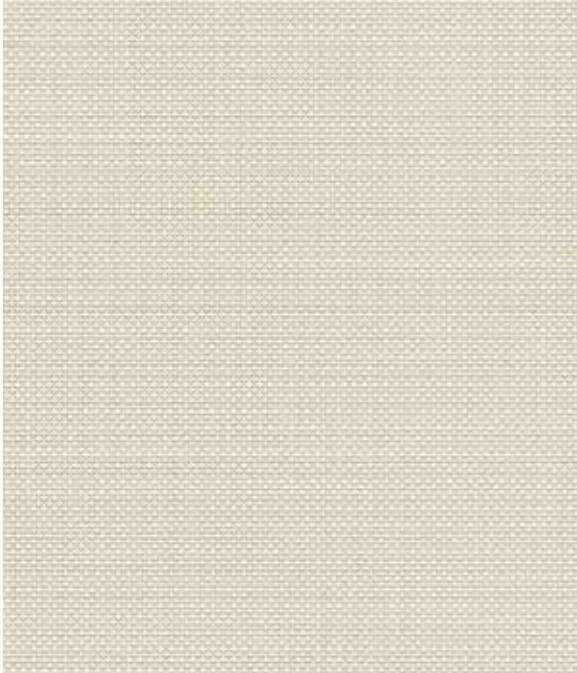
SOLAR PROTECTION FABRICS

# PERSPECTIVE ALUVIEW



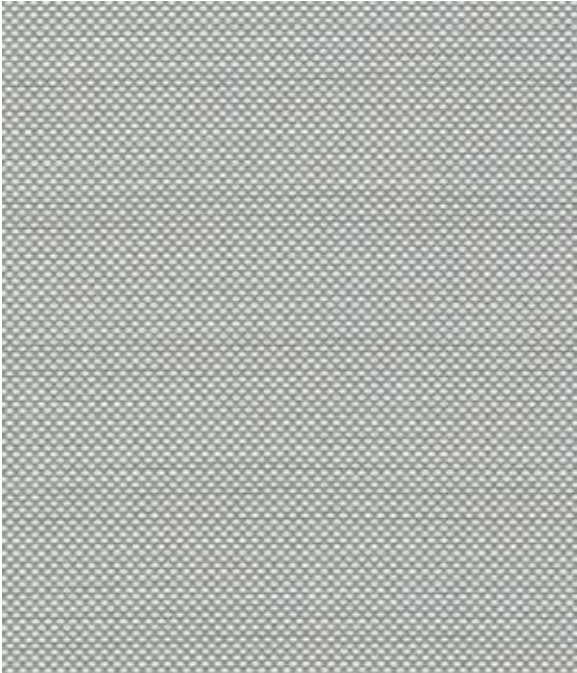
WHITE

2.5m 2068910A  
89mm 2068910D  
127mm 2068910B



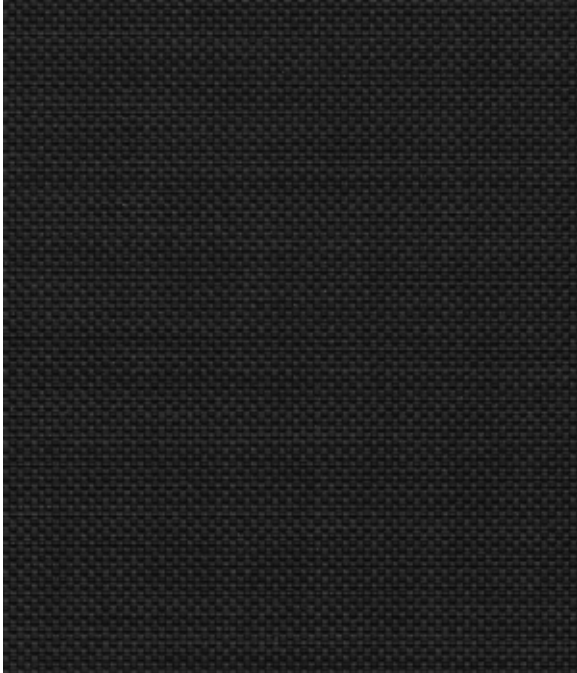
BEIGE

2.5m 2068422A  
89mm 2068422D  
127mm 2068422B



GREY

2.5m 2068292A  
89mm 2068292D  
127mm 2068292B

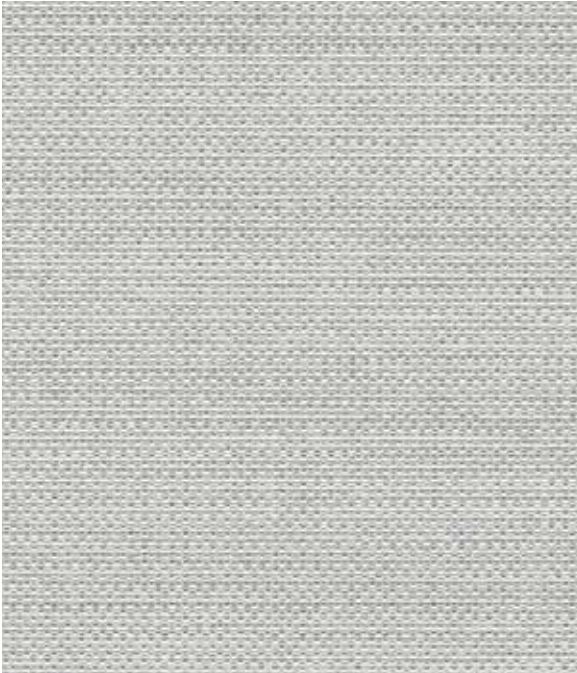


BLACK

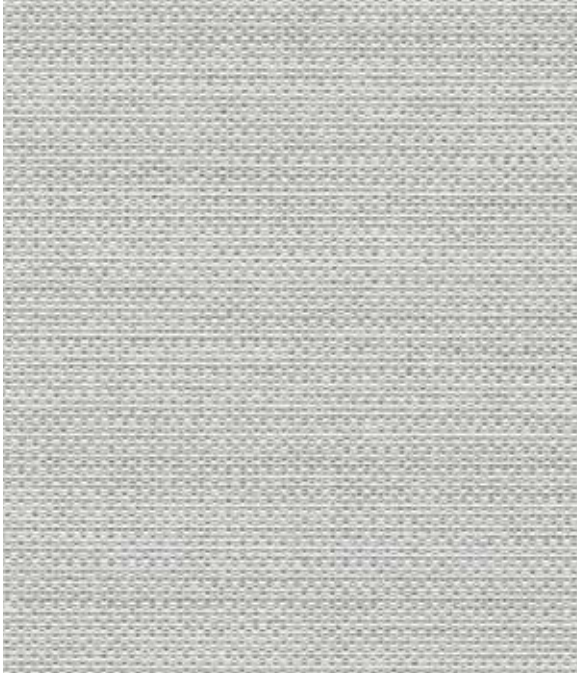
2.5m 2068195A  
89mm 2068195D  
127mm 2068195B

# PERSPECTIVE ALUVIEW

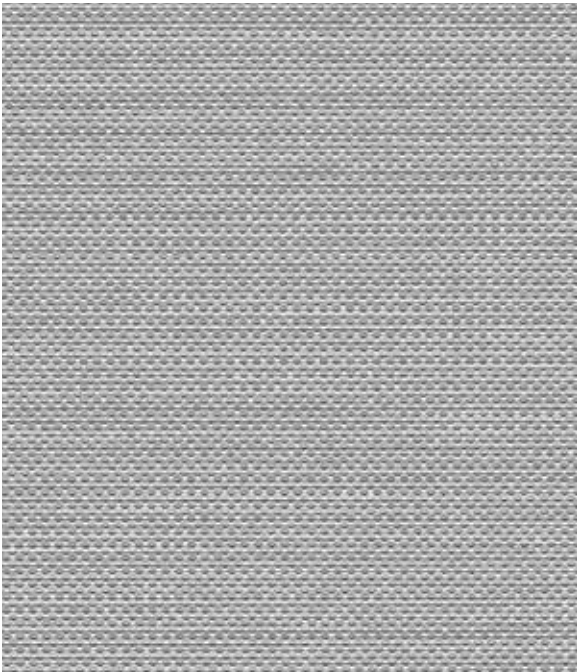
These are the reverse of the fabrics.



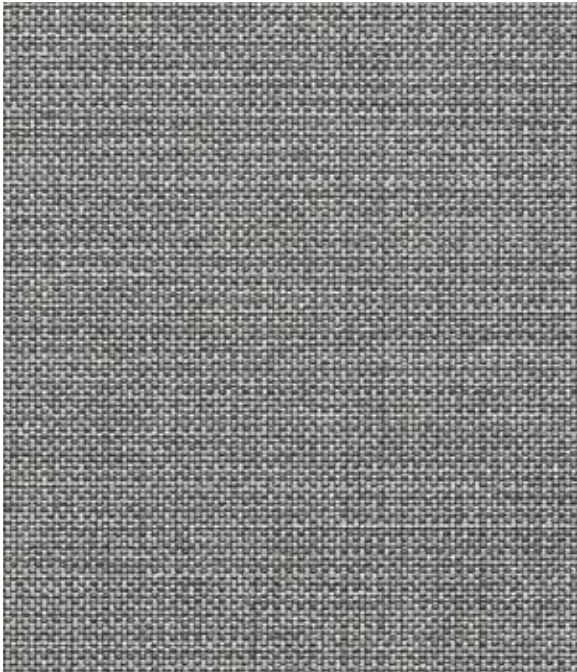
WHITE



BEIGE



GREY



BLACK

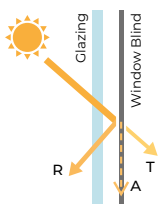
# REFLECTIVE ALUMINIUM BACK

# LOW E PERFORMANCE

Perspective Aluview's metallised backing acts as a thermal barrier at the window. It enhances the thermal energy and low-e performance of the fabric, reducing the demand for artificial heating and cooling. This reflective 3% screen provides optimum natural light with visual comfort, better glare control and outward visibility.

Specifications	Perspective Aluview
Colour Range	4
Openness	3%
Dim Out	Light Filtering
Composition	76% PVC 22% Polyester 2% Aluminium Coating
Exterior Colour	Aluminised Coating
Roller Width	2.5m
Roller Roll Length	20m
Vertical Louvre Widths	89mm, 127mm
Vertical Roll Length	100m
Weight	512g/m <sup>2</sup>
Thickness	0.64mm
Fabric Finish	2x2 Basket Weave
Blind Types	Roller, Panel, Vertical
Mechanical Resistance	Warp Weft
Breaking	≥ 1497 N/5cm ≥ 1370.6 N/5cm
Tearing	≥ 27.9 N ≥ 23.8 N
Colour Fastness (scale of 8)	8 - BS EN ISO 105-B02-2014
Flammability Standard	BS 5867 Part 2 Type B German B1 EN 13773:2003 Class 1 NFPA 701-2015 Method 1
Environmental Certification Flammability Standard	Greenguard® Gold Certified Greenguard® Certified Oeko-tex Standard 100 Certified
Bacteria & Fungal Resistant	ASTM E2180, ASTM G21
Lead Free	ASTM E1645/RoHs
Cleaning	The aluminium coating is fragile and must be handled with care to avoid damage. Gently wipe clean the fabric face with a soft, damp cloth. Allow to dry in down position.

Solar, Optical & Colour Fastness Properties																			
	Solar			Visual			UV Block	CF	DP	SC - EN 14501					Gtot				
	R <sub>s</sub>	A <sub>s</sub>	T <sub>s</sub>	R <sub>v</sub>	A <sub>v</sub>	T <sub>v</sub>				A	B	C	D	E	A	B	C	D	E
Beige	70	22	8	66	26	8	96	8	0	0.36	0.39	0.39	0.28	0.39	0.31	0.34	0.34	0.25	0.34
Black	44	53	3	43	53	3	96	8	0	0.53	0.54	0.49	0.31	0.47	0.46	0.47	0.42	0.27	0.41
Grey	69	23	8	65	26	9	96	8	0	0.37	0.40	0.40	0.28	0.39	0.32	0.35	0.34	0.25	0.34
White	73	16	11	73	17	10	95	8	0	0.35	0.38	0.38	0.28	0.39	0.30	0.33	0.33	0.24	0.33



**Solar Gain:** The amount of heat increase resulting from solar energy entering a room. It is the total of three separate parts - the amount of energy transmitted directly into the room, the energy which is absorbed by the blind and the proportion of energy which is absorbed by the window.

**R:** % of reflected heat and light.  
**A:** % of absorbed heat and light.  
**T:** % of transmitted heat and light.  
**UV Block:** the % of UV light blocked by the fabric.

**Colour Fastness (CF):** Scale of 8, BS EN ISO 105-B02-2014.  
**Darkening Performance (DP):** Scale of 0-4. 0: lowest opacity 4: highest. A rating of 4 indicates the product is completely opaque with no pinholes or light transfer.

**Shading Co-efficient (SC):** The solar heat gain with the blind at the window divided by the solar heat gain with no blind at the window. The lower the shading co-efficient, the higher the efficiency of the fabric.  
**Gtot:** Amount of heat entering through the glazing and shading combined.

**Glazing system (EN 410)**  
**A:** Clear Single Glazing.  
**B:** Clear Double Glazing.  
**C:** Clear Double Glazing Low Emissivity.  
**D:** Solar Control Double Glazing Low Emissivity.  
**E:** Triple Glazing.

# PERSPECTIVE ALUVIEW

