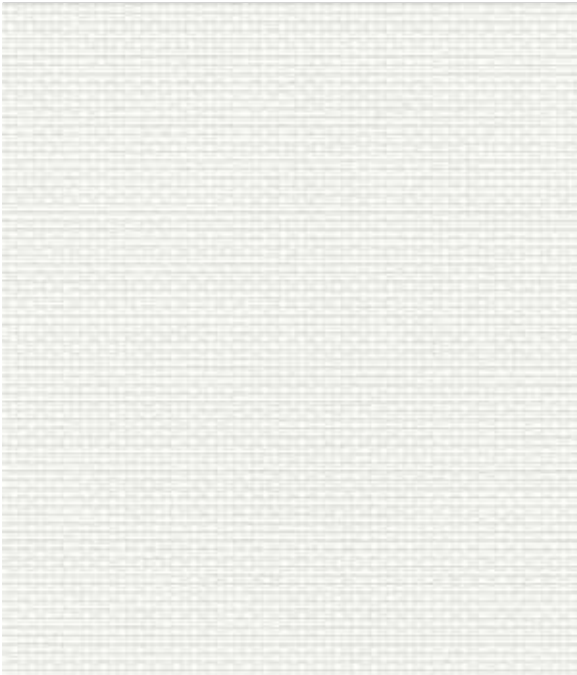


0%

# PERSPECTIVE BLACKOUT

SOLAR PROTECTION FABRICS

# PERSPECTIVE BLACKOUT



WHITE

3m 2069910A  
89mm 2069910D  
127mm 2069910B



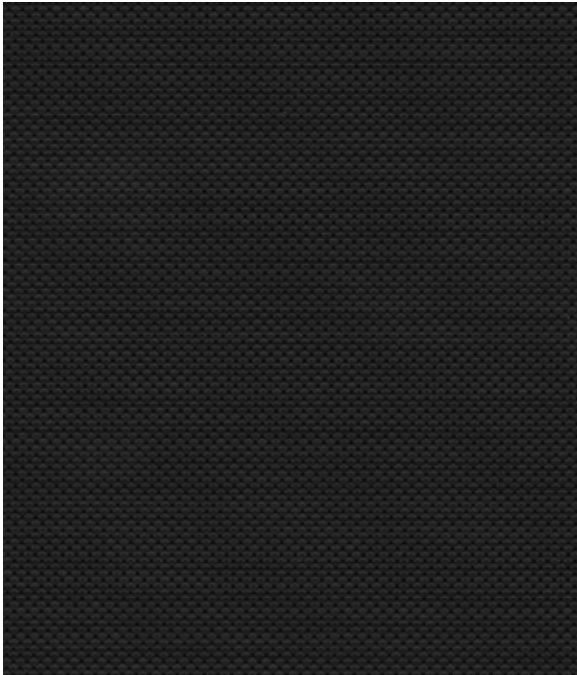
BEIGE

3m 2069422A  
89mm 2069422D  
127mm 2069422B



GREY

3m 2069292A  
89mm 2069292D  
127mm 2069292B



BLACK

3m 2069195A  
89mm 2069195D  
127mm 2069195B

# PERSPECTIVE BLACKOUT

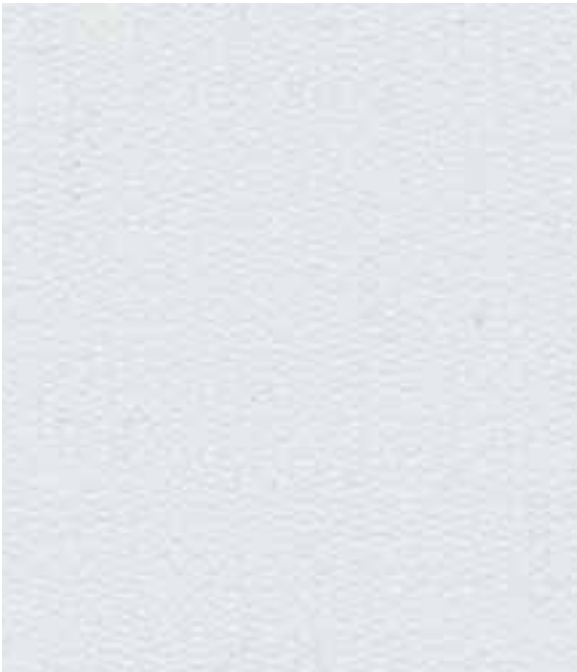
These are the reverse of the fabrics.



WHITE



BEIGE



GREY



BLACK

# 0% OPENNESS

# UNIFORM EXTERIOR AESTHETIC

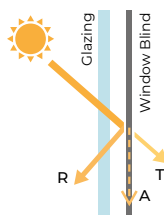
Blocks 100% of UV and up to 75% of solar radiation. Ideal for where room darkening is required while providing a cohesive internal aesthetic with other Perspective screens.

Pair with Perspective 3% White Back for a matching face and a uniform exterior facade.

Specifications	Perspective Blackout
Colour Range	4
Openness	0%
Dim Out	Blackout
Composition	55% PVC 15% Polyester 30% Acrylic coating
Exterior Colour	White
Roller Width	3m
Roller Roll Length	20m
Vertical Louvre Widths	89mm, 127mm
Vertical Roll Length	100m
Weight	660g/m <sup>2</sup>
Thickness	0.75mm
Fabric Finish	2x2 Basket Weave with Acrylic Blackout Coating
Blind Types	Roller, Panel, Vertical
Mechanical Resistance	Warp Weft
Breaking	≥ 1551.3 N/5cm    ≥ 1142.8 N/5cm
Tearing	≥ 26.6 N    ≥ 24.4 N
Colour Fastness (scale of 8)	8 - BS EN ISO 105-B02-2014
Flammability Standard	BS 5867 Part 2 Type B German B1 EN 13773:2003 Class 1 NFPA 701-2015 Method 1
Environmental Certification	Greenguard® Gold Certified Greenguard® Certified Oeko-tex Standard 100 Certified
Bacteria & Fungal Resistant	ASTM E2180, ASTM G21
Lead Free	ASTM E1645/RoHs
Cleaning	Gently wipe clean with a soft, damp cloth. Allow to dry in down position.

### Solar, Optical & Colour Fastness Properties

	Solar			Visual			UV Block	CF	DP	SC - EN 14501					Gtot				
	R <sub>s</sub>	A <sub>s</sub>	T <sub>s</sub>	R <sub>v</sub>	A <sub>v</sub>	T <sub>v</sub>				A	B	C	D	E	A	B	C	D	E
Beige	71	29	0	81	19	0	100	8	3	0.34	0.38	0.39	0.28	0.38	0.30	0.33	0.34	0.24	0.33
Black	75	25	0	85	15	0	100	8	3	0.31	0.36	0.37	0.28	0.37	0.27	0.31	0.32	0.24	0.32
Grey	71	29	0	81	19	0	100	8	3	0.34	0.38	0.39	0.28	0.38	0.30	0.33	0.34	0.24	0.33
White	71	29	0	81	19	0	100	8	3	0.34	0.38	0.39	0.28	0.38	0.30	0.33	0.34	0.24	0.33



**Solar Gain:** The amount of heat increase resulting from solar energy entering a room. It is the total of three separate parts - the amount of energy transmitted directly into the room, the energy which is absorbed by the blind and the proportion of energy which is absorbed by the window.

**R:** % of reflected heat and light.  
**A:** % of absorbed heat and light.  
**T:** % of transmitted heat and light.

**UV Block:** the % of UV light blocked by the fabric.

**Colour Fastness (CF):** Scale of 8, BS EN ISO 105-B02-2014.

**Darkening Performance (DP):** Scale of 0-4. 0: lowest opacity 4: highest. A rating of 4 indicates the product is completely opaque with no pinholes or light transfer.

**Please note: Blackout fabric does not create total darkness. As a blind there will be lightstrike around the blind edges.**

**Shading Co-efficient (SC):** The solar heat gain with the blind at the window divided by the solar heat gain with no blind at the window. The lower the shading co-efficient, the higher the efficiency of the fabric.

**Gtot:** Amount of heat entering through the glazing and shading combined.

**Glazing system (EN 410)**  
A: Clear Single Glazing.  
B: Clear Double Glazing.  
C: Clear Double Glazing Low Emissivity.  
D: Solar Control Double Glazing Low Emissivity.  
E: Triple Glazing.

# PERSPECTIVE BLACKOUT

